



REFRIGERATION HARDWARE SUPPLY CORPORATION

632 Foresight Circle, Grand Junction, CO 81505
Phone: (800) 716-7788 • FAX: (800) 835-6655
Email: colorado@rhsparts.com

9021 Norris Ave., Sun Valley, CA 91352
Phone: (800) 537-8300 • FAX: (800) 833-3515
Email: california@rhsparts.com

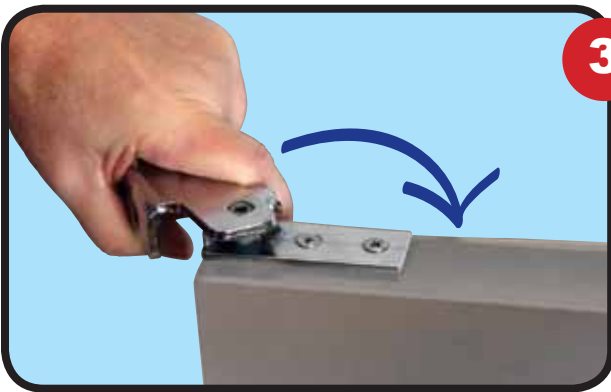
PIVOT HINGE - INSTALLATION



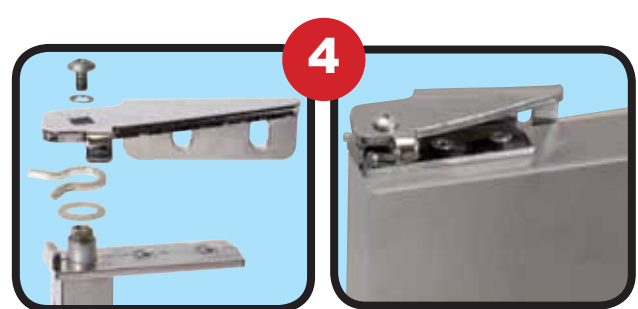
STEP 1
Insert nylon pivot bushing into the square opening at the bottom of the door. This is a simple push-in procedure.



STEP 2
Insert spring cartridge into the square opening at the top of the door. Secure the cartridge to the door with two countersunk screws.



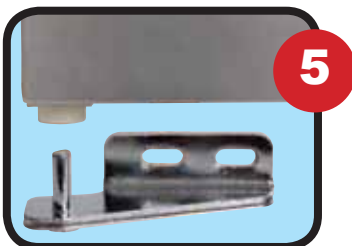
STEP 3
With top spring cartridge secure, take the top cabinet bracket and use its square opening as a wrench to turn the square pin of the cartridge. Rotate it about 120° clockwise to 'pre-load' the spring into a 'neutral position.' Leave the bracket on the pin and see if it tightly presses against the inside (or back) of the door. If it does, you are ready to move to step 4. If you do not have tension in this position, rotate the pin again as necessary.



EXPLODED VIEW

COMPLETED VIEW

STEP 4
Place nylon bushing and horseshoe stop clip on the cartridge pin. Then place the top bracket over the pin. Place star washer over the top of the square bracket opening and insert the retaining screw, securing the bracket in place on the spring cartridge.



STEP 5
Bolt the bottom bracket to the door frame, but do not tighten bolts yet. Set the bottom nylon pivot bushing onto the bottom bracket pin.



STEP 6
Swing the door open, but keep the top bracket in place against the door frame (see photo above). Bolt the top bracket to the door frame, but do not tighten bolts yet. Swing the door closed. If spring cartridge is set correctly, the door should almost 'snap' shut against the frame. If door does not seal evenly against the frame, take apart top assembly & repeat step 3. If door tension is correct, square door against unit & tighten top & bottom bracket bolts.